

USER GUIDE

INTRODUCTION

Congratulations on choosing one of the worlds most sophisticated Jetwash machines.

Please read this manual carefully, it contains valuable information about the use and maintenance of your machine.

SPECIFICATIONS	page 2
CONTROLS & FEATURES	page 3
CARE & MAINTENANCE	page 4
SIMPLE FAULT FINDING	page 5
WARRANTY CONDITIONS	page 6
HEALTH AND SAFETY	page 7

SPECIFICATIONS

Cabinet constructed from bright stainless steel, internally protected from frost by heat loss from its own 6KW immersion heater. Integral water softener feeds hot/cold water storage complying with WRC regulations. Computer controlled operation with non resettable counters recording each program use. Non volatile RAM memory ensures program is held in the event of power failure. All electrical components protected by either fuse or circuit breaker. Programmable coin/token mechanism allows up to 12 different coin inputs. External wire reinforced hoses suspended through sprung loaded booms.

OPTIONS

WHEEL & TYRE CLEAN -

A non acidic effective way of cleaning brake dust and oxide from wheels and tyres, particularly alloys.

INTERNAL CASH SAFE -

A secure 5mm safe with unique 25mm bar locking enabling the machine to hold up to £1000 in assorted coins.

TRIPLE COLOUR FOAMS -

A rainbow of changing foam as you wash great fun and a proven hit with the customers.

COUNTERS - Non resettable counters record each operation.

RINSE KEYSWITCH - Enables 3 minutes rinse on each operation to clean down wash area, without effecting counters.

CHEMICAL PUMPS - Accurate metering pumps for all products.

PRESSURE GAUGE- Constant pump pressure monitor

MOTOR PUMP - The heart of the machine, providing water for all functions.

WATER SOFTENER - Regenerating softener treats all incoming water, providing superior wash results and alleviating the problems of limescale.

CHEMICAL STORAGE - Colour coded and labelled drop tubes ease their use.

IMMERSION HEATER - Industrial grade 6 KW element supplies continuous hot water and protects internal components against freezing.

COIN/TOKEN ACCEPTOR - Electronic acceptor programmed to your requirements.

MAINS ISOLATOR - Local ON/OFF isolator - LEAVE ON AT ALL TIMES.

CARE & MAINTENANCE

Your machine is designed to withstand the rigours of outdoor life, however it has been proven that increased revenue occurs on a regularly cleaned unit. Use a mild acid cleaner or descaler to remove limescale build up.

DAILY

- Clean exterior.
- Check hoses for wear
- Check brush / spraywand - especially nozzle protector at tip.(Replace if necessary).
- Check chemicals and replenish where necessary.
- Check softener salt - keep above water level.
- Check interior pipework for leaks.
- Check pump oil level.

WEEKLY

Operate machine through all functions, paying particular attention to :

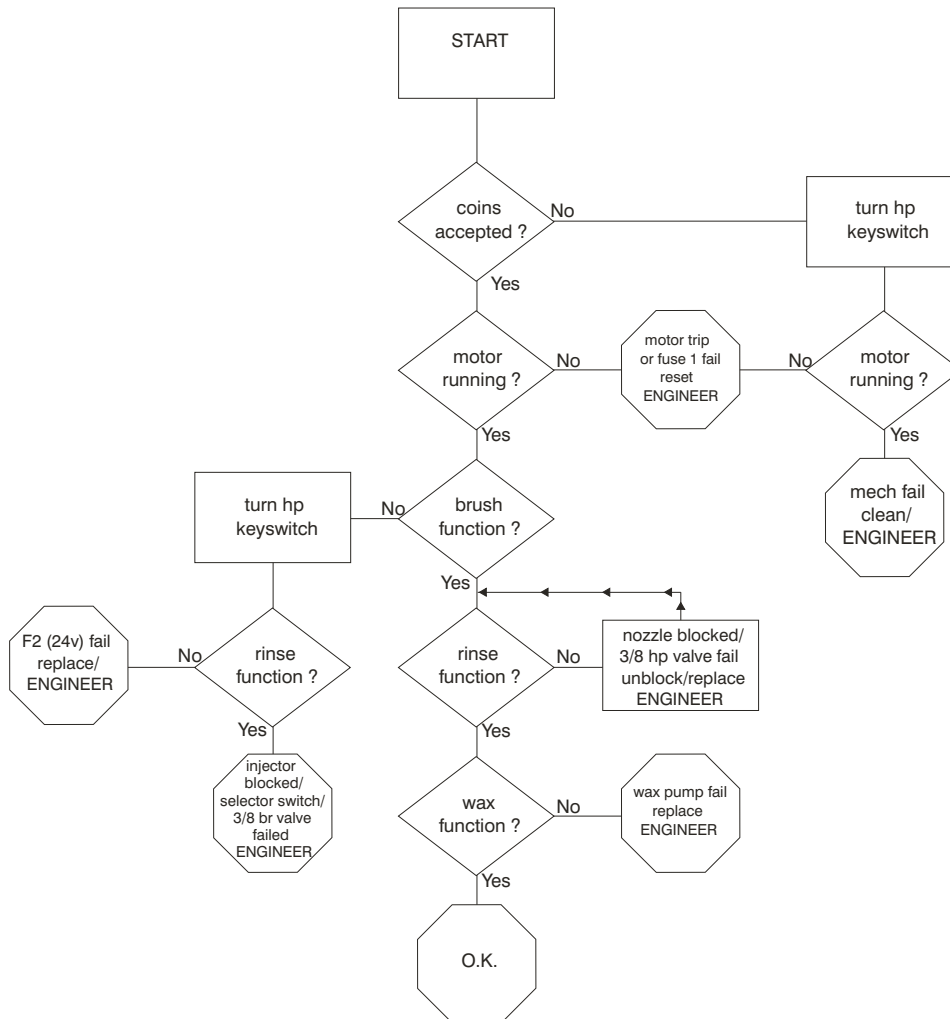
- a. Pump pressure (not to exceed 80 Bar on shampoo).
- b. Foaming effect.
- c. Water temperature (hand warm on brush).



CAUTION - This machine **MUST BE LEFT ON** at ALL TIMES. The inbuilt water softener requires power during the night to regenerate. More importantly, if left in cold weather the unit could freeze without internal heating causing irreparable damage and voiding any warranty.

FAULT FINDING

Before starting ensure all chemicals are topped up including salt and water and power is to machine



WARRANTY CONDITIONS



1. Jetset washsystems undertake that parts which are found to be faulty, due to imperfections in material or workmanship, shall be replaced or repaired, free of charge by Authorised Jetset Service personnel during the first twelve months from date of purchase.
2. This cover does not extend to external accessories, hoses, spraywand or brush, light bulbs, fair wear and tear on main pump seals or any misuse or abuse by customers.
3. No parts of this machine should be removed or repaired by unauthorised agents. Failure to comply could result in loss of rights under this guarantee. The use of unapproved chemicals could also result in part, or all of any claim being rejected.
4. While every endeavour is made to quickly service this equipment, no claim can be accepted for loss of revenue by the owner, however caused.

HEALTH AND SAFETY

PRODUCTS COVERED

Shampoo, Hi foam, Wax.

HAZARDS IDENTIFICATION

These products are NOT classified as dangerous for supply in the UK.

SAFETY PRECAUTIONS

Keep out of reach of children.

In case of contact with eyes, rinse immediately with water and seek medical advice.

If swallowed, seek immediate medical advice and show this sheet or the container.

TOXICOLOGICAL INFORMATION

Eyes-	May cause transient irritation.
Skin-	May cause irritation on prolonged contact.
Inhalation-	Low volatility makes inhalation unlikely
Ingestion-	Not a significant hazard.
Chronic-	None known.
Other-	None known.

FIRST AID MEASURES

Eyes-	Irrigate immediately with water Obtain medical attention if symptoms persist.
Skin-	Wash affected areas with soap and water
Inhalation-	Remove from exposure - unlikely to occur
Ingestion-	If conscious, give water to drink. Do not induce vomiting. Take patient to hospital or obtain medical attention immediately. Beware of aspiration if vomiting occurs.